

## Railway Industry

## Rail Industry Services

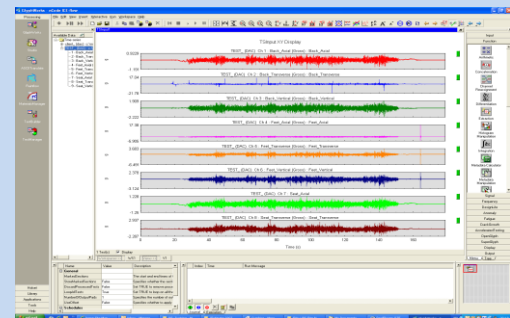
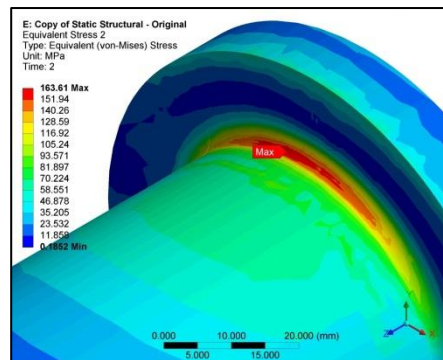


### Keywords

- ▶ Instrumentation Engineers
- ▶ Test Engineers
- ▶ Materials Engineers
- ▶ Strain Gauge specialists
- ▶ Electronics Engineers
- ▶ Stress Engineers
- ▶ FEA Specialists

Nprime Ltd Engineering Services to the Railway industry include:

- Dynamic testing on rolling stock – bogies, yaw dampers and other structural components.
- Residual stress testing on passenger carriages, locomotives and wagons.
- Rig testing on rolling stock – bogies and structural components.
- Strain gauging installation on all vehicles and structures.
- Engineering data acquisition and monitoring.
- Telemetry system for data measurement and analysis.
- Engineering data analysis and reporting.
- Fatigue life analysis (test and FEA).
- Web-based Data Analysis Management and Automation.
- Full project consultancy management.
- Engineering Training Courses



Nprime Limited  
3-6 Kelham Square  
Kelham Island  
Sheffield S3 8SD  
United Kingdom  
Tel: +44(0)114 2727 868  
Fax: +44(0)08704 299 258  
Email: [info@nprime.co.uk](mailto:info@nprime.co.uk)  
Web: [www.nprime.co.uk](http://www.nprime.co.uk)

Nprime Ltd is a partner to Wyle TDS, HBM, Quasonix, OROS and ATI Telemetry.